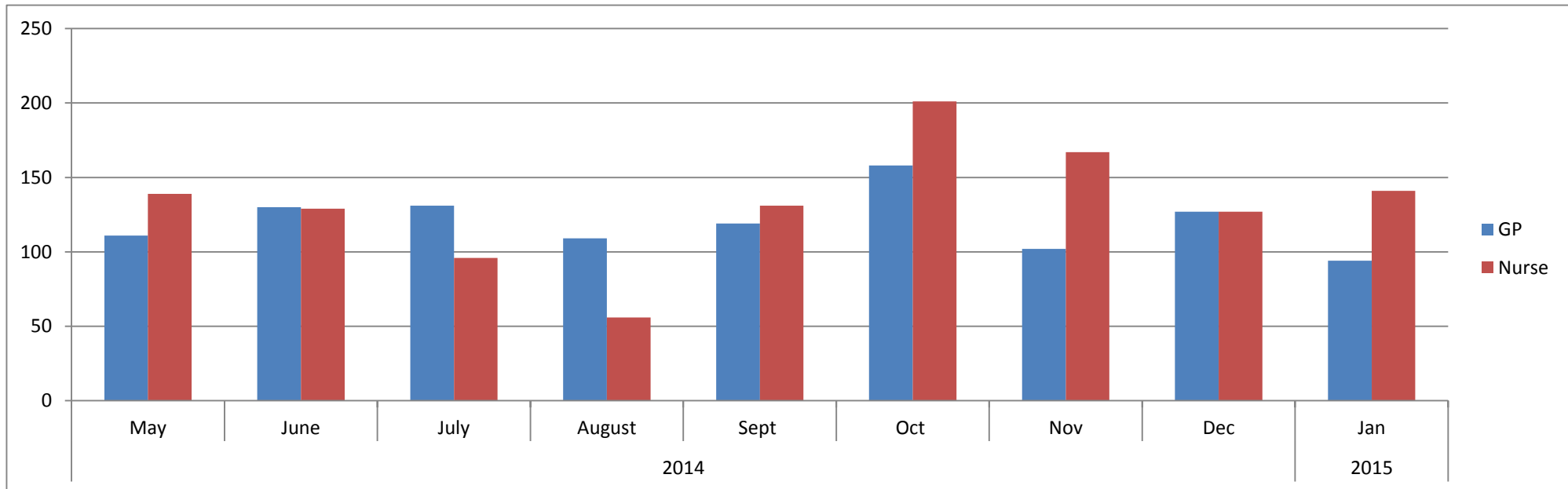


Numbers of appointments wasted May 2014 to January 2015



WHAT DOES THIS MEAN FOR YOU?

Longer wait times for an appointment AND reduced access to your GP's and Nurses

***ON AVERAGE 27 MORE PATIENTS PER WEEK COULD ACCESS THEIR GP
AND 30 MORE COULD SEE THE NURSE!***

PLEASE CANCEL UNWANTED APPOINTMENTS